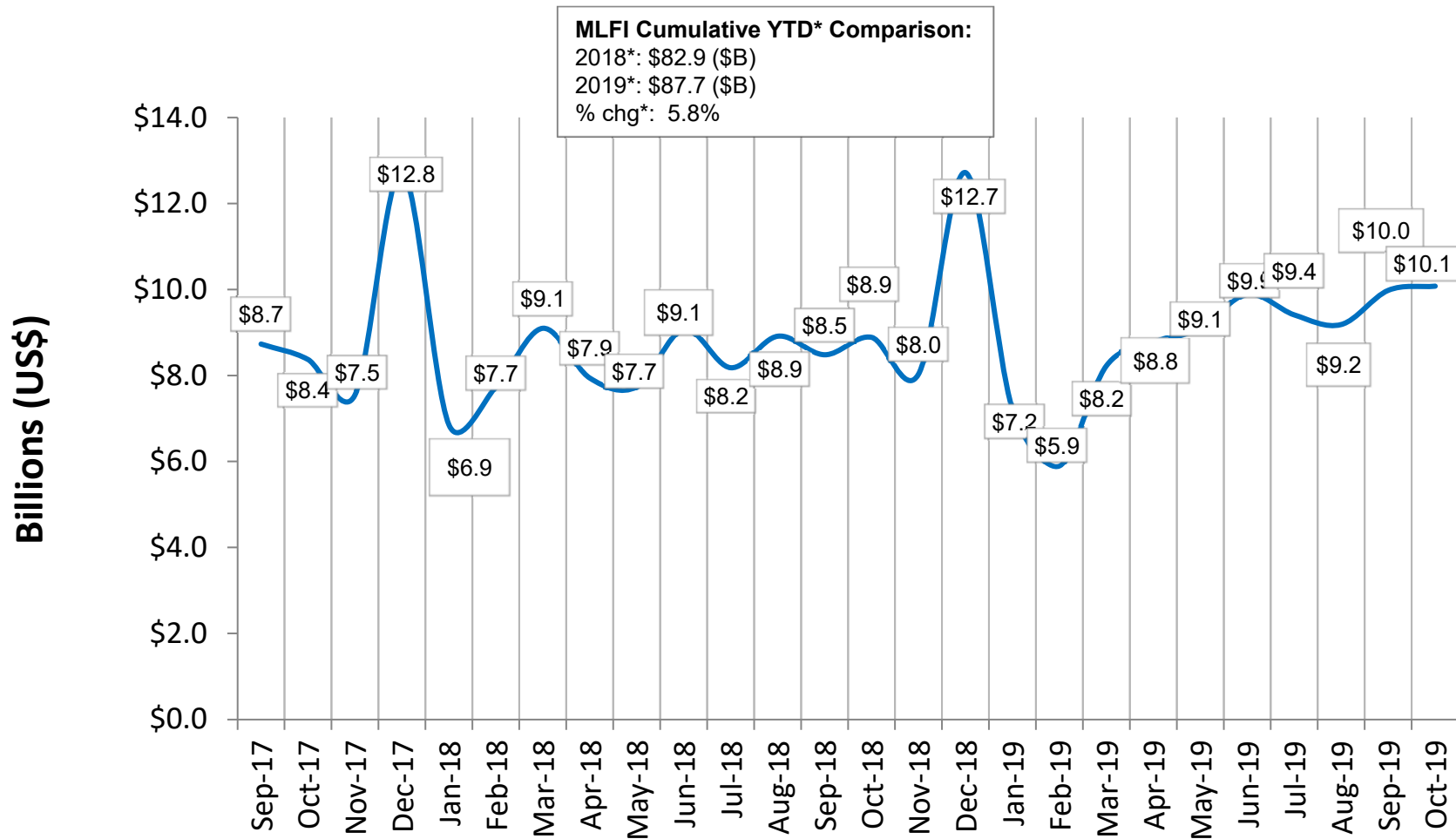


# Monthly Leasing & Finance Index

Oct 2019

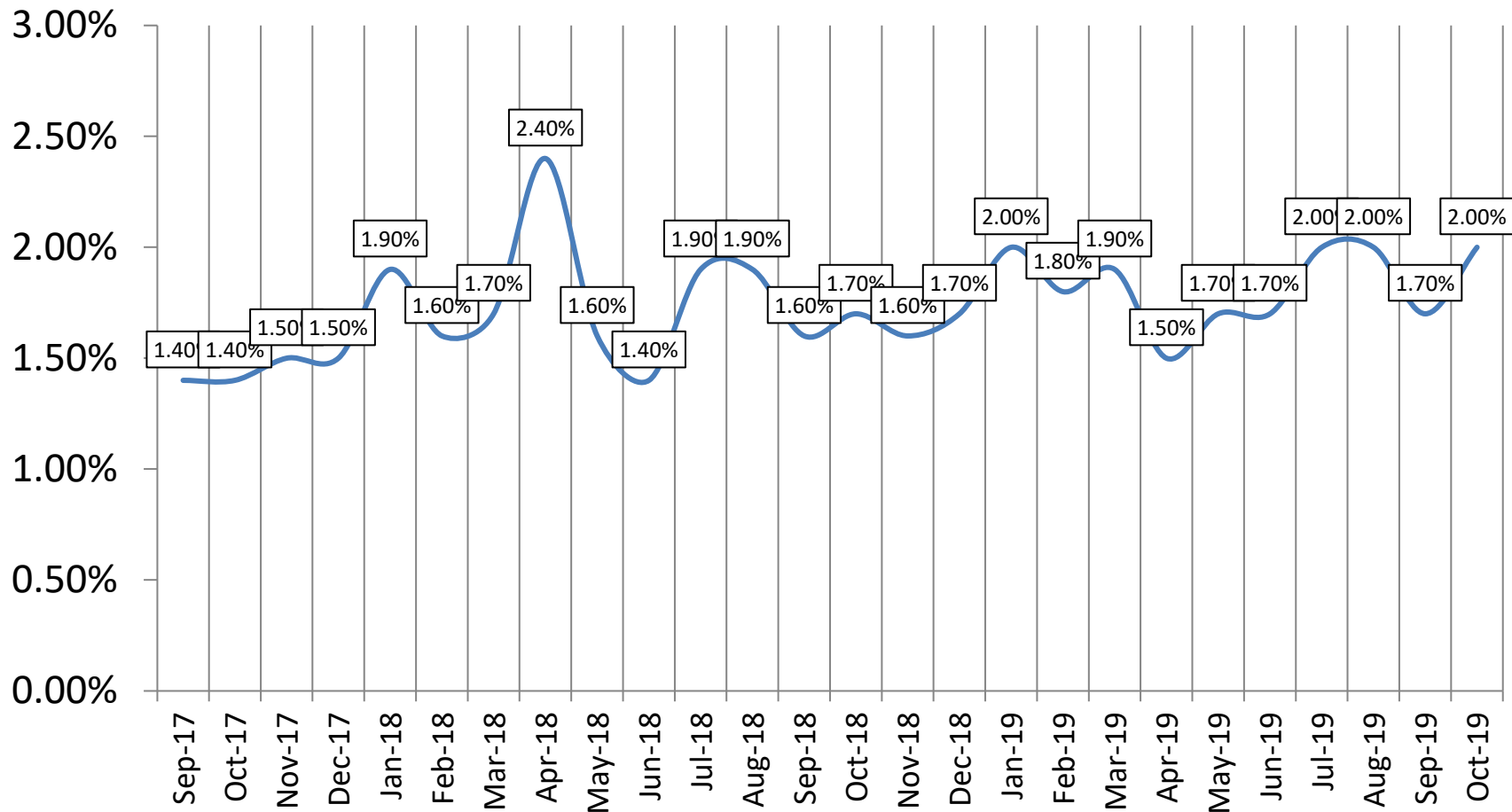


# MLFI-25 New Business Volume (Year-Over-Year Comparison)

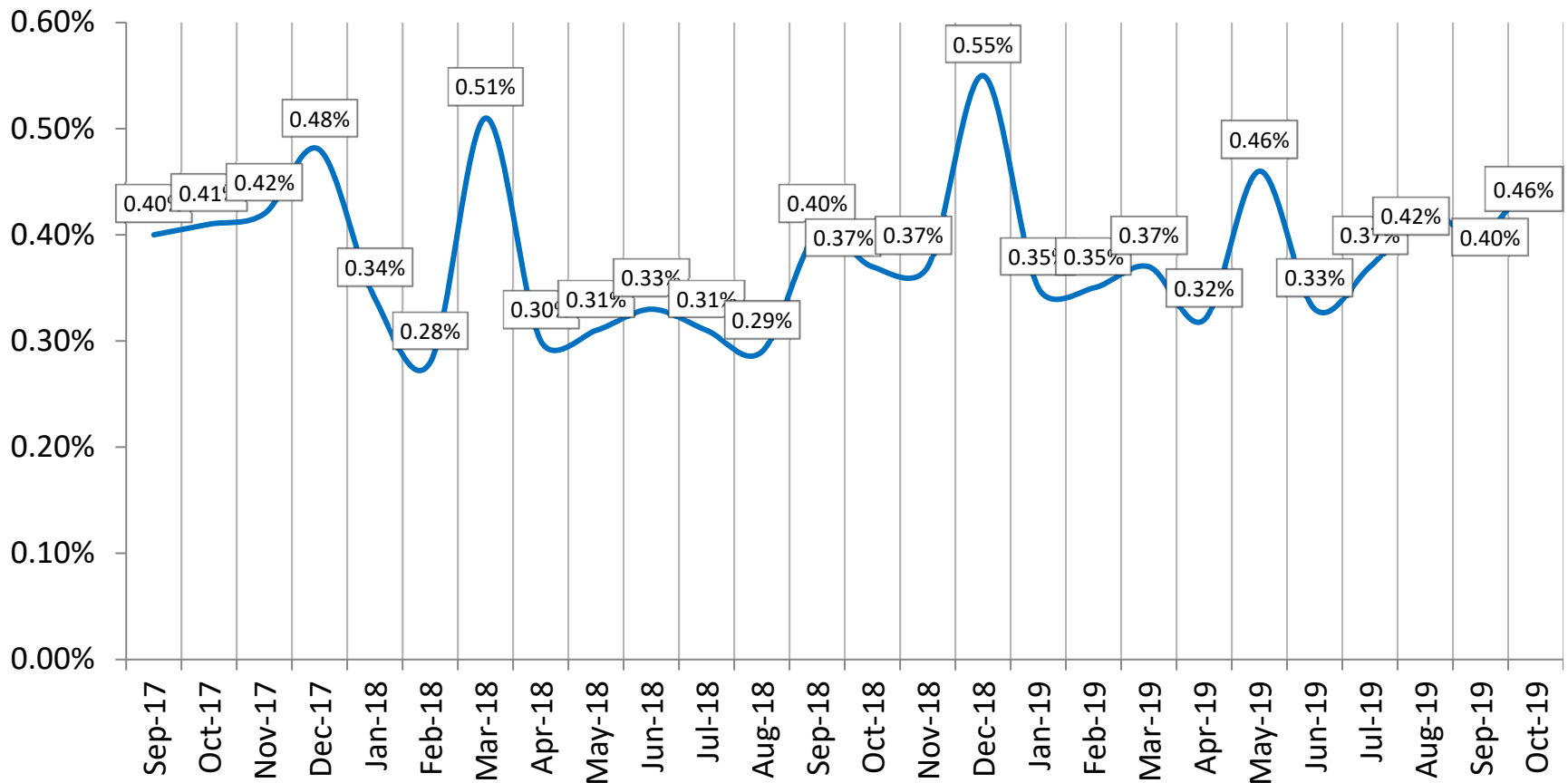


\* YTD NBV numbers will not match the numbers from the chart due to rounding

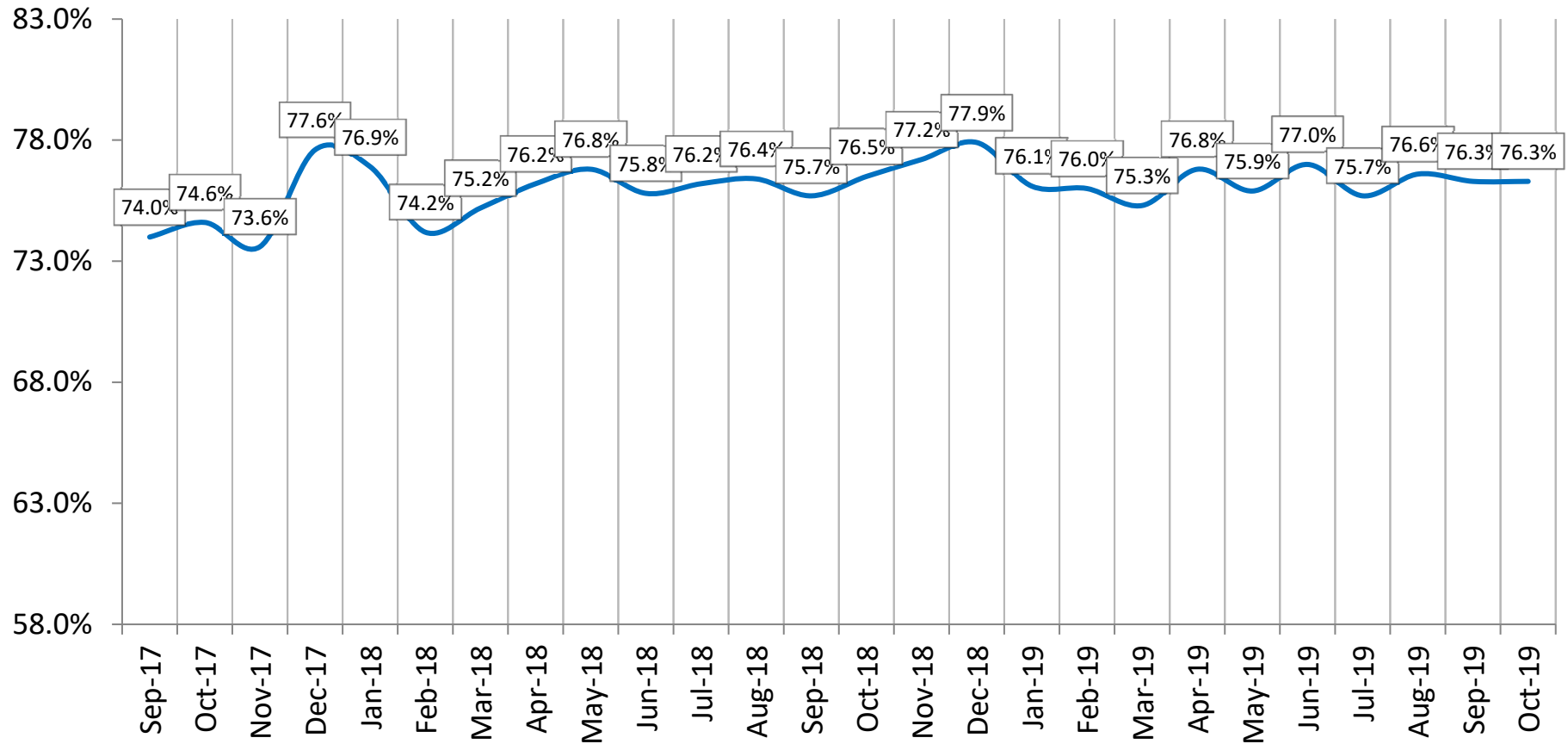
# Aging of Receivables Over 30 Days



# Average Losses (Charge-offs) as a % of Net Receivables



# Credit Approvals As % of All Decisions Submitted



# Total Number of Employees % CHG YOY

